

Company

The company Otto Littmann Maschinenfabrik Präzisionsmechanik GmbH is a specialist in the field of precision manufacturing.

Our comprehensive range of services includes CAD-CAM supported rough machining by turning, milling and eroding, fine machining by grinding and lapping, all the way to decorative and functional coating systems (e.g. hard chrome and electroless nickel).

Combined with state-of-the-art CAQ controlled measuring and testing equipment, we can offer our customers not only individual processes, but also entire solutions from a single source.

Range of parts

The possibility of transmitting very high torques and the good dynamic properties (high running smoothness) make polygon connections more and more important in modern mechanical engineering.

Otto Littmann uses modern CNC processing machines for various industrial areas such as energy technology, medical technology, mechanical engineering and electrical engineering to manufacture a wide variety of polygonal connections, both in finishing by grinding, as well as in the complete production of machine parts with polygonal components.

We manufacture the polygons according to DIN 32711 and DIN 32712 up to a length of 100 mm (inside and outside polygons).

Product examples



Figure 1: Polygon socket completely manufactured with inner polygon



Figure 2: Hollow shaft completely manufactured with an outer polygon



Figure 3: Shaft with outer polygon

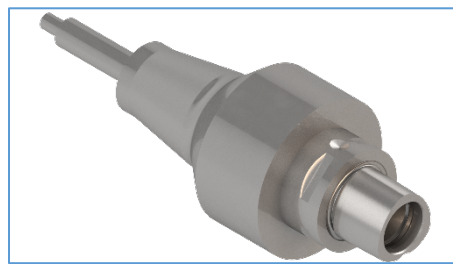


Figure 4: Capto workpiece holder completely manufactured